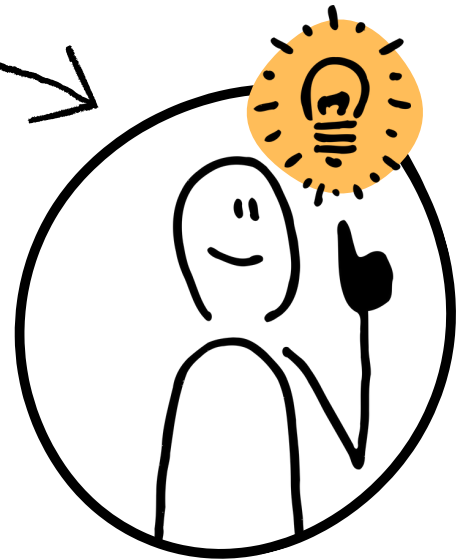


Year 8

CURRICULUM
AUTUMN TERM



01

Poetry Across Cultures and
'Journey's End'

The focus of the first half term is to develop the student's skills within poetry. Throughout this half term teachers will use a brand-new anthology designed to expose students to a variety of poems, as well as linking poems with other forms of literature including song lyrics and play scripts.

Within this unit students will study three key areas: Greek myth, Romance, and War. The selected poems are from a variety of time periods and various poets, including some poets included within the GCSE anthology. Each poem has been carefully selected to ensure students are exposed to a range of: poetic devices, structures, and themes.

Throughout this half term students will develop their skills in analysing poems through class discussion and poem annotations. Alongside this, students will develop understanding of how to write analytically about the poems they have studied and how to structure exam style responses. This will involve students writing about individual poems as well as developing comparative techniques.

This unit is designed to encourage student's enjoyment of poetry by covering a variety of engaging and challenging topics. Some key ideas within the poems have been chosen to enhance exposure to cultural capital and cross-curricular links, especially with Drama and History.

In the second half term of the academic year, students will study 'Journey's End' by R C Sherriff.

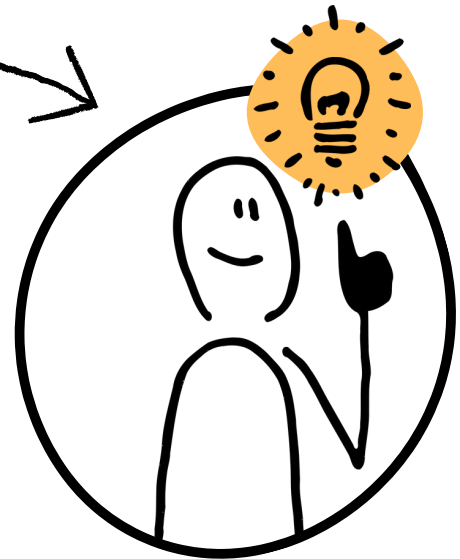
Teachers will draw on their experience to bring the text alive through drama while developing their students' verbal and non-verbal communications skills and confidence. By making thematic and contextual links between the world presented on stage and in cinema and our own society in which we live, teachers will bring to life the relevance and importance of the play. Themes ranging from friendship, fear, and war will be explored and debated in a sensitive and insightful way.

Throughout the unit, teachers will aim to enhance students' artistic and creative abilities while encouraging them to consider ideologies and belief systems throughout the twentieth century while exploring their relevance in today's modern world.

Key Concepts Covered: Gender Expectations and the Patriarchy; Social Class and Hierarchy; Power and Conflict; Imagined Worlds and Human Nature; Identity, Diversity, and Discrimination

Year 8

CURRICULUM
SPRING TERM



02

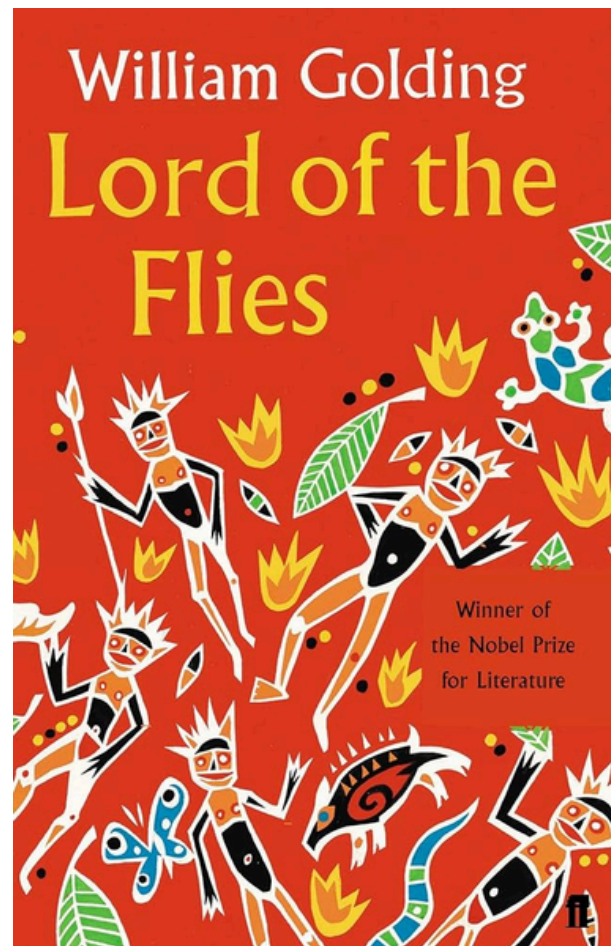
'Lord of the Flies'

Students begin this half term by studying the novel 'Lord of the Flies' by William Golding in its entirety. While studying the novel as a class, students will learn to interpret questions and ideas while supporting their opinions with quotations and textual reference. Students will explore writer's craft and appreciate a range of methods used by a writer to achieve a desired response from their reader. Intertwined with this, will be the teaching of the novel's themes from leadership to savagery and civilization and man's interaction with the natural world, as students will learn to become critical thinkers surrounding text production and reception.

Throughout the half term, emphasis is given to reading skills as the students will complete a variety of questions to develop their ability to critically analyse and explore material in depth. Throughout the second half term, the focus is on developing students' writing skills across a range of forms: from creative writing: descriptive and narrative; to transactional writing: articles, letters, speeches, leaflets and essays.

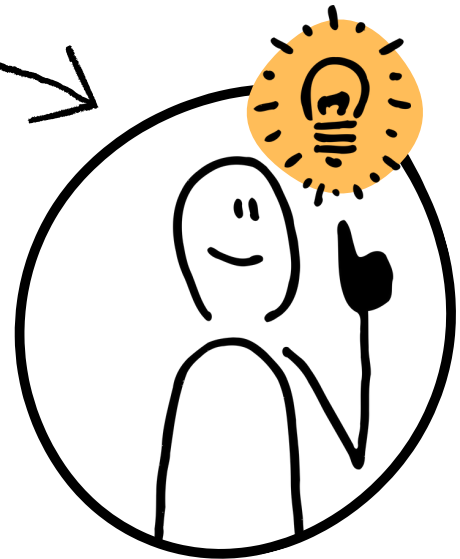
Key Concepts Covered

Imagined Worlds and Human Nature
Power & Conflict
Social Class and Hierarchy



Year 8

CURRICULUM
SUMMER TERM



03

Current Affairs

During this term students will develop their skills in reading and analysing different sources with a focus on topical events to keep students engaged and enthused.

Students will begin the term by looking at a variety of non-fiction sources. These will include articles, letters, diaries/blogs, reviews and speeches. Teachers will use a range of sources from varying time-periods to ensure that there is exposure to 19th, 20th, and 21st century texts. The texts will be selected to include topics such as War, Animal Testing, Democracy, Global Warming and Climate change to allow expansion of cultural capital and relevant context for GCSE Literature texts.

Throughout this half term, emphasis is given to increasing reading comprehension, understanding how to analyse language and structure and how a writer crafts a text to promote an opinion or viewpoint. Students will also learn how to compare two texts to identify differences and similarities in how they are written and how that alters meaning.

Students will use a variety of stimuli such as non-fiction sources, documentaries, and current events to inspire their viewpoint writing. This will continue to develop the students' cultural capital and promote understanding of how to adopt a persona to create a piece of writing based on their adopted perspective.

Key Concepts Covered

Identity, Diversity, and Discrimination
Power and Conflict
Social Class and Hierarchy
Gender Expectations and the Patriarchy

