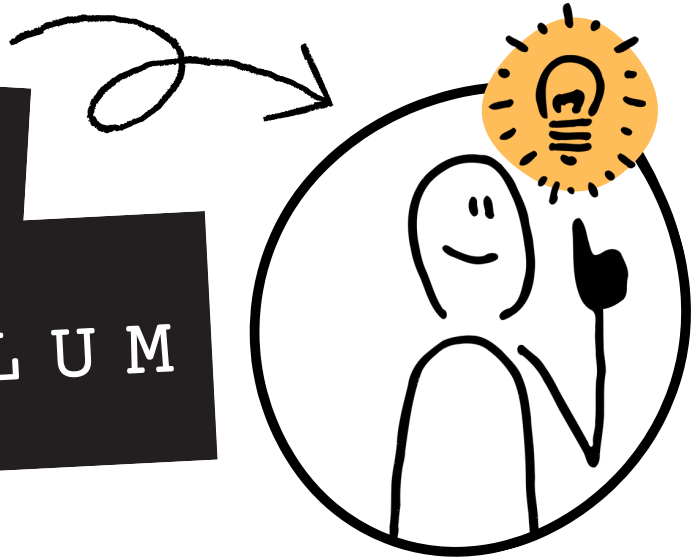


KS5

CURRICULUM



Year 12

At Sigma Sixth, Colchester Campus, students follow the AQA Exam Board for English Literature A Level.

In the first year, students study for Paper 1: 'Love Through the Ages'. With each of their three teachers, students follow one core texts:

'Othello' by William Shakespeare
Post-1900 Poetry and Unseen Poetry
'Persuasion' by Jane Austen

While studying these texts, teachers are highly ambitious for students and their progress and development into confident academic students and writers in preparation for their life after A Levels.

Teachers develop students' familiarity the varying presentation of love throughout different literary and artistic movements from the Renaissance, through the Enlightenment, Romanticism, Realism up to Modernism and Post-Modernism.

Students develop their critical skills of interpretation and analysis with an appreciation to contexts of production and reception.

Course Structure

Year 12 - Paper 1: 'Love Through the Ages' (40%)

Year 13 - Paper 2: 'Texts in Shared Contexts' (40%)

NEA (Non-Examined Assessment): 2,500 word essay (20%)

Assessment Objectives

A01: Articulate informed, personal and creative responses to literary texts, using associated concepts and terminology, and coherent, accurate written expression.

A02: Analyse ways in which meanings are shaped in literary texts.

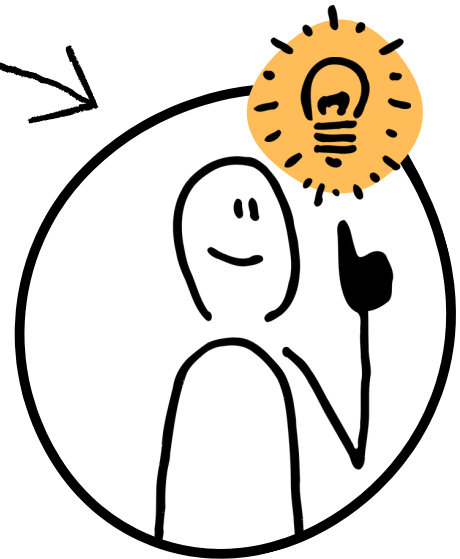
A03: Demonstrate understanding of the significance and influence of the contexts in which literary texts are written and received.

A04: Explore connections across literary texts.

A05: Explore literary texts informed by different interpretations.

KS5

CURRICULUM



Year 13

Following their successful completion of Year 12, students move on to study for Paper 2: 'Texts in Shared Contexts'.

As in the first year, students are taught one core text by each of their three teachers for the A Level alongside a range of prose extracts to prepare students for the unseen element of their examination:

'The Handmaid's Tale' by Margaret Atwood
'A Streetcar Named Desire' by Tennessee Williams
'Feminine Gospels' by Carol Ann Duffy

While studying their prose, drama, and poetry texts, students continue to develop the range of skills necessary to build confidence with the assessment objectives of the course as was the case in Year 12.

Alongside this, students are guided through the NEA (Non-Examined Assessment) whereby they explore the works of Charlotte Perkins-Gilman including: 'The Giant Wysteria' (1891), 'The Yellow Wallpaper' (1892), and 'The Unnatural Mother' (1895). Students are then supported in formulating a question for exploration alongside another text entirely of their choosing.

Key Concepts Covered

Imagined Worlds and Human Nature
Identity, Diversity, and Discrimination
Power and Conflict
Social Class and Hierarchy
Gender Expectations and The Patriarchy

